

XG958 WHEEL LOADER



Features

- Optimized working device, great breakout force and short cycling time (10.5s).
- Great dumping height(3330mm).
- Fork type frame with CAT technology ensures good stability of whole machine.
- Patented hydraulic technology features energy-efficient and better dynamic character.



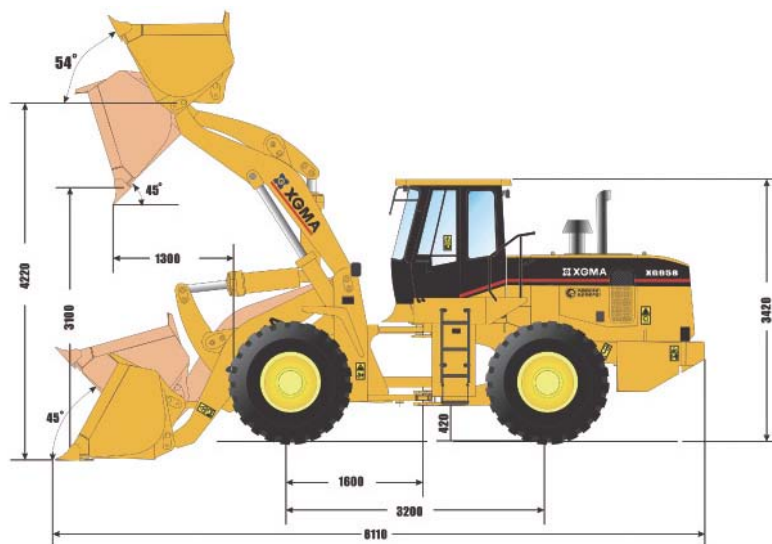
Excellent Performance

- High-quality turbo charging engine with low fuel consumption provides large torque reserve.
- ZF transmission features high reliability and efficiency.
- Mono-lever control transmission with K-D function is easy to operate.
- Large traction, short cycle time and outstanding performance.
- Wet multi-disk braking and emergency braking system ensure safe driving.
- Strong and durable bucket with great digging force.
- Well organized Parker hydraulic hoses.
- Coaxial flow amplifying steer system and pilot control.
- Dual-pump confluence-diffusion, and equivalent control relief hydraulic system save energy.

- Auto-leveling and lifting kickout electronic devices.
- Extra-large engine hood provides easier access for maintenance.
- Central-articulated frame, features good integrated stability and high structural strength.
- Multiple optional attachments meet different requirements of customers.

Optional Equipment (additional price needed)

- Cummins 6CTA8.3 engine
- ZF drive axle
- Rock bucket 2.5m³
- Light bucket 3.6m³
- Side dumping bucket 1.8m³
- Log grapple
- Fops/Rops with Cab



Specifications

Overall dimensions	
Operating weight	17000 kg
Overall length	8110 mm
Overall width	2990 mm
Overall height	3450 mm
Tires	23.5-25-16 PR
Technical Specification	
Rated Power	162 kw
Rated load	5000 kg
Bucket capacity	2.2-3.6 m ³
Dump height	3100 mm
Dump reach	1200 mm

Transmission	ZF 4WG200
Lifting time	≤6.5 s
Total cycle time	≤11 s
Turning angle	35°
Turning radius	7200 mm
Breakout force	165kN
Fuel tank capacity	300 L
Hydraulic oil tank capacity	250 L
Travel speed	
Speed ranges(F/R)	4/3
Forward I/II	6.9/12.4 km/h
Forward III/IV	25/39 km/h
Reverse I/II/III	6.9/12.4/25 km/h