

## XG955III WHEEL LOADER



### Features

- Traction under combined work condition is over 20% more than that of similar products.
- Patented hydraulic technology save energy and fuel.
- Fuel consumption per hour is 3.34 liter, less than that of similar products.
- The patented working devices are applicable to heavy-load work condition.
- The loading/uploading capacity of bulk materials is 300M<sup>3</sup>/h



### Excellent Performance

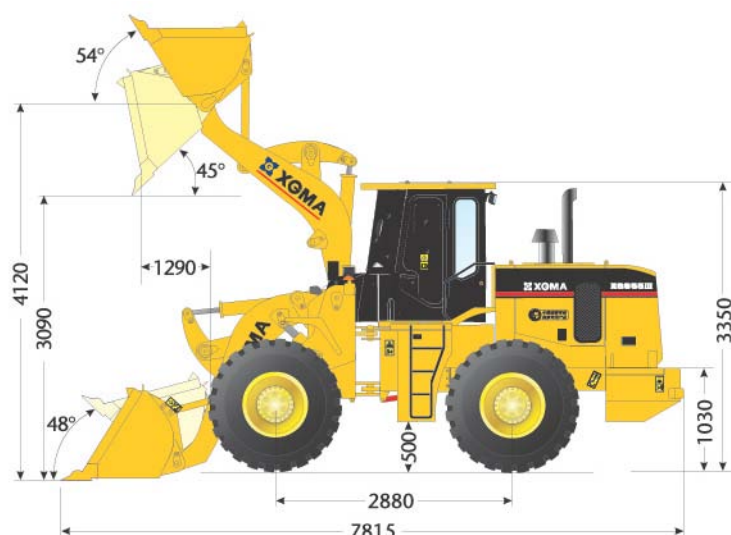
- Shanghai SC11CB220G2B1 engine features high efficiency, big torque and long service life.
- With the small turning radius and flexible performance, the product is applicable for operation in confined working condition.
- Aluminum lift-type cooling torque converter oil and hydraulic oil radiator allows optimized air channel design ensure the thermal balance of machine.
- The torque converter, adopting the XGMA patented technology, guarantees more reliable operation (patent No.: ZL20072006267.7).
- All hydraulic coaxial flow amplifying steering system features flexible steering; the pilot

control hydraulic system features easy operation.

- The electronic device with automatic leveling and lift kickout function improve the operating performance.
- The machine is equipped with the centralized lubrication system and grease nipple is equipped with a dust cover, which allow convenient maintenance and higher cleanliness.
- The improved strengthened bucket with high-strength wear-resistant plate and edge-angle teeth is more durable.
- Optimized improvement on machine appearance, oil line and counterweight fully improve reliability.

### Optional equipment (additional price needed)

- Long boom
- Rock bucket • Coal bucket
- Log grapple



### Specifications

Overall Dimensions	
Operating weight	17200 kg
Overall length	7815 mm
Overall width	2990 mm
Overall height	3350 mm
Tires	23.5-25-16 PR
Technical Specification	
Rated Power	162 kw
Rated load	5000 kg
Bucket capacity	2.2-3.6m <sup>3</sup>
Dump height	3140 mm

Dump reach	1260 mm
Transmission	XG
Lifting time	≤6 s
Total cycle time	≤11.2 s
Turning angle	35°
Turning radius	6550 mm
Breakout force	155kN
Fuel tank capacity	230 L
Hydraulic oil tank capacity	280 L
Travel Speed	
Speed ranges(F/R)	2/1
Forward I	11.5 km/h
Forward II	38 km/h
Reverse I	16 km/h