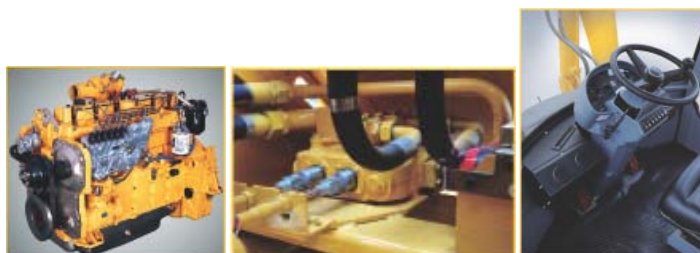


## XG953III WHEEL LOADER



### Features

- Brand new appearance a complete upgrade.
- Working pump discharge (compared to competitors) is 35% less, and energy consumption is 20% less.
- Working fuel consumption every hour is 3.34L less than that of the competitors.



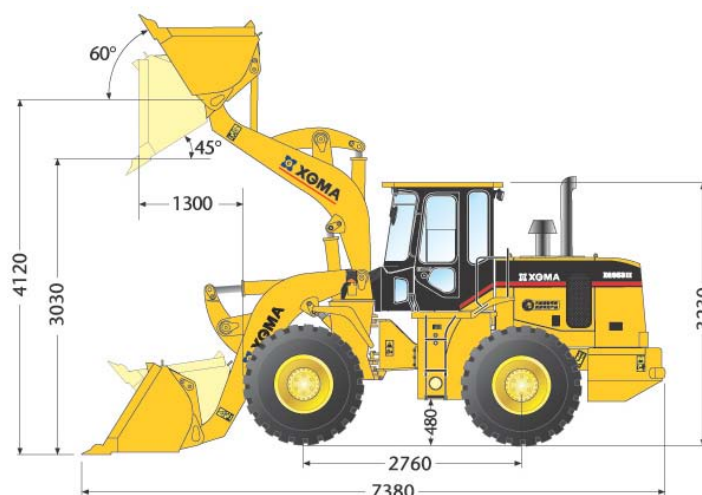
### Excellent Performance

- Small turning radius improves mobility and flexibility of XG953III, meeting the requirement of working in confined space.
- Shanghai SC9D220G2 turbo-charging engine features great power performance, large torque reserve and low fuel consumption.
- Torque converter with the patent technology of XGMA ensures more reliable operation (patent NO.:ZL20072006267.7)
- Modified overrunning clutch and imported key bearing make the transmission and torque converter system more reliable.
- Aluminum lift-type cooling torque converter, hydraulic oil radiator and optimized-designed air channel ensures the thermal equilibrium of the machine.
- Hydraulic coaxial flow amplifying steering system with patent technology of XGMA and dual pump confluence-diffusion features faster lift speed, higher performance efficiency and less energy consumption.

- Modified machining technique of frame with high dimension precision ensures better stability.
- Z-bar linkage working device featuring high breakout force increase working efficiency. Modified high-strength bucket integrating wear-resistant cutting board which is equipped with corner teeth for more durability.
- Water-proof and dust-proof electric connectors, maintenance-free storage battery of international brand and negative-pole cutting power switch are safe and reliable.

### Optional Equipment (additional price needed)

- Long boom • Rock bucket • Coal bucket
- Woodchip bucket • Light-material bucket
- Side dumping bucket • Snow remover(hydraulic type)
- Log grapple • Grass grapple • Fork
- Grammer seat



### Specifications

Overall Dimensions	
Operating weight	16800 kg
Overall length	7380 mm
Overall width	3000 mm
Overall height	3230 mm
Tires	23.5-25-16 PR
Technical Specification	
Rated Power	162 kw
Rated load	5000 kg
Bucket capacity	2.2-4.5m <sup>3</sup>
Dump height	3140 mm
Dump reach	1225 mm

Transmission	XG
Lifting time	5.9 s
Total cycle time	10.9s
Turning angle	35°
Turning radius	6560 mm
Fuel tank capacity	200 L
Hydraulic oil tank capacity	280 L
Travel Speed	
Speed ranges(F/R)	2/1
Forward I	11.5 km/h
Forward II	38 km/h
Reverse I	16 km/h